

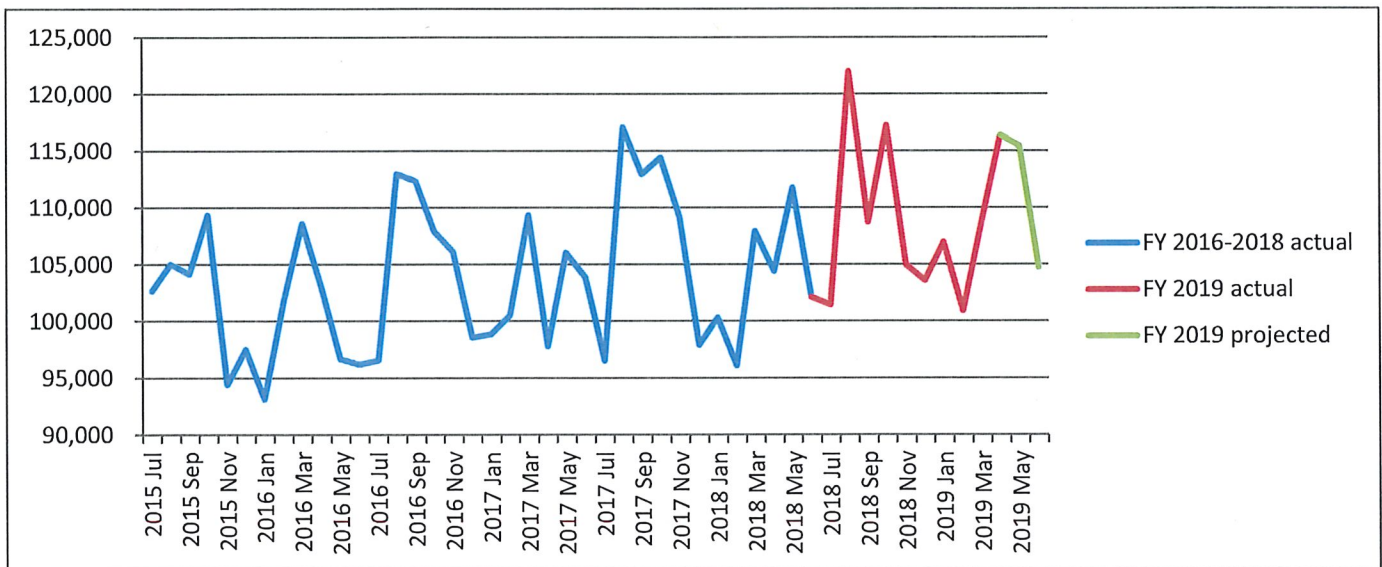
Planning Board Report

May 20, 2019

Ridership Table Notes

- Line 10: 501 student ridership is back up to normal counts.
- Line 16: Freedom Pass ridership has rebounded, up 50% from March's count.
- Lines 21-28: Paratransit ridership is the highest in over 2 years. Capital City Taxi has overcome their slump and carried 55% of the total paratranist trips.
- Total ridership FY YTD is up 3.2% compared to a year ago.
- If May & June ridership matches last year's trends for those months, total ridership for FY 2019 will exceed 1,311,000 trips (1,270,633 FY 2018), bucking national trends.

Topeka Metro Total Ridership by Month
(not included: bikes or SOTO/NETO workforce riders)



Bus (MB+TB)

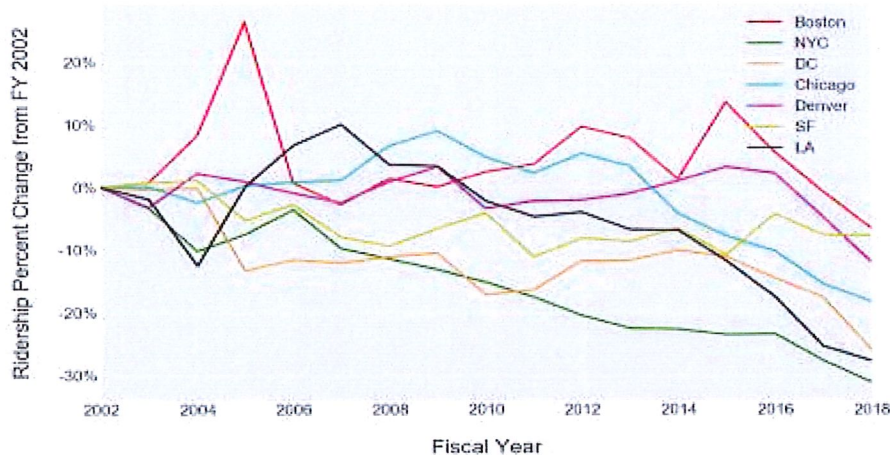


FIGURE 1. Percent Change in Transit Ridership from 2002 (source: TRB)

Topeka Metropolitan Transit Authority
 Passengers, Hours and Miles
 FY2019

Ridership Table

		Apr 2019	% Change	FY2019 To Date	% Change	Apr 2018	FY2018 To Date	Apr 2017	FY2017 To Date
		Passengers							
		Fixed Route							
Line #									
1	Adult Cash	8,783	-7.1%	90,602	-19.6%	9,455	112,734	14,635	195,072
2	24Hr	14,322	28.9%	129,568	7.7%	11,109	120,286	8,487	8,487
3	Annual	549	-19.3%	5,646	17.2%	680	4,818	176	176
4	<i>Full Fare Subtotal</i>	23,654	11.3%	225,816	-5.1%	21,244	237,838	23,298	203,735
5	Reduced	34,007	24.2%	299,591	7.4%	27,375	278,963	25,917	282,389
6	24Hr Reduced	17,558	32.3%	155,844	34.8%	13,268	115,589	9,179	9,179
7	<i>Reduced Subtotal</i>	51,565	26.9%	455,435	15.4%	40,643	394,552	35,096	291,568
8	Student	16,196	6.0%	151,042	-7.4%	15,276	163,062	12,534	138,140
9	Student 24Hr	920	42.9%	5,469	-1.2%	644	5,533	1,014	1,014
10	<i>Student Subtotal</i>	17,116	7.5%	156,511	-7.2%	15,920	168,595	13,548	139,154
11	Washburn	4,038	3.8%	36,071	-21.5%	3,891	45,937	4,943	51,442
12	City Employees	116	-23.2%	1,249	727.2%	151	151	0	0
13	Flex	85	107.3%	667	80.8%	41	369	73	515
14	Transfers	0	-			0		377	
15	Promotions	162	-19.4%	14,862	-4.6%	201	15,571	367	34,535
16	Freedom Pass	750	-2.6%	6,610	-9.4%	770	7,299	784	6,729
17	Other Non-Rev	14,024	-18.3%	150,390	3.5%	17,170	145,327	14,961	148,669
18	<i>Non-Revenue Subtotal</i>	14,936	-17.7%	171,862	2.2%	18,141	168,197	16,489	309,527
19	Total Fixed Route	111,510	11.6%	1,047,611	3.2%	99,880	1,015,488	93,447	995,941
		Paratransit							
20	TMTA Operated	2,121	9.7%	18,790	3.1%	1,933	18,232	2,006	20,979
21	<i>Ambulatory</i>	155	-39.5%	1,691	-39.0%	256	2,772	313	2,568
22	<i>Wheelchair</i>	1,753	18.3%	15,332	11.8%	1,482	13,711	1,519	16,243
23	<i>PCA</i>	213	9.2%	1,767	1.0%	195	1,749	174	2,168
24	Taxi Service	2,554	15.7%	23,319	14.2%	2,207	20,420	2,099	21,446
25	<i>Ambulatory</i>	2,389	13.5%	21,187	9.1%	2,104	19,411	1,977	20,427
26	<i>Wheelchair</i>	73		1,262		0	0	0	0
27	<i>PCA</i>	92	-10.7%	870	-13.8%	103	1,009	122	1,019
28	Total Paratransit	4,675	12.9%	42,109	8.9%	4,140	38,652	4,105	42,425
		Revenue Hours							
29	Fixed Route	5,170	4.8%	50,141	0.7%	4,931	49,808	4,853	49,795
30	TMTA Paratransit	965	12.5%	8,694	4.8%	858	8,296	963	10,580
31	Taxi Paratransit	712	19.9%	6,367	19.8%	594	5,317	612	5,424
32	Total Revenue Hours	6,847	7.3%	65,201	2.8%	6,383	63,421	6,428	65,799
		Revenue Miles							
33	Fixed Route	75,038	2.2%	744,904	0.2%	73,427	743,584	69,338	713,670
34	TMTA Paratransit	12,931	13.9%	114,813	5.2%	11,357	109,116	12,047	128,727
35	Taxi Paratransit	10,770	16.0%	97,505	13.9%	9,288	85,576	8,636	119,013
36	Total Revenue Miles	98,739	5.0%	957,221	2.0%	94,072	938,276	90,021	961,410
		Speed MPH							
37	Fixed Route	14.5	-2.5%			14.9		14.3	
38	TMTA Paratransit	13.4	1.2%			13.2		12.5	
39	Taxi Paratransit	15.1	-3.3%			15.6		14.1	